

BOSE® L1® UPDATER SOFTWARE FOR MAC OS X

Introduction

The Bose L1 Updater Software allows you to enjoy the versatility of your T1 ToneMatch® audio engine. The Bose *L1® Updater Software* easily integrates with your computer allowing you to download new ToneMatch® presets to your T1, back up data, and share user defined data.

System Requirements

Mac OS X version 10.3 or higher

USB 2.0

Required Cabling

- USB interface cable with an A-type and B-type connector (not included)

Please refer to your T1 ToneMatch® audio engine's Owners Guide for instructions on how to connect your T1 to your computer.

Downloading the L1 Updater Software

1. Click on the Download *L1® Updater Software* for MAC link at **www.Bose.com/Musicians**. You may receive an alert stating that the file that you are downloading contains an application. Please click Continue to proceed with the download.

2. The L1® Updater .ZIP file will be placed on your desktop.

Note: *It is encouraged that you store any .BOS files that you download in the same folder as the L1® Updater Application. We recommend creating this folder on your desktop or in your Documents folder to make it easily accessible.*

3. Double Click the L1® Updater .ZIP file.
4. The L1® Updater .APP icon will appear in the specified folder beside the L1® Updater .ZIP file.
5. Your download is complete.

Running the L1® Updater Application

1. Connect the USB cable (sold separately) to the USB port on your MAC as well as the USB port on the rear panel of the T1 ToneMatch® audio engine.
*Please refer to your T1 ToneMatch® audio engine's Owners Guide for further instructions.
2. Turn on your T1 ToneMatch® audio engine.
3. Double Click on the L1® Updater .APP icon.
4. The *L1® Updater Software* will launch displaying the user interface that may be used to update or backup system data.

Using .BOS files

There are several types of **.BOS** files that work exclusively with your T1 ToneMatch® audio engine:

- ToneMatch® Presets
- Factory Scenes
- User Scenes
- Shared Scenes
- Firmware

To learn more about these features please refer to your T1 ToneMatch® audio engines Owner's Guide.

Downloading .BOS files


1. Go to **www.Bose.com/Musicians** to obtain **.BOS** files.
2. Choose a file to download.


.BOS files are available online as compressed ZIP files. These files are smaller, allowing for faster download. You will need to decompress these files before you can use them with your T1 ToneMatch audio engine.

3. Save the ZIP file to your local computer.
4. If the ZIP file does not automatically decompress, you will need to manually decompress the ZIP file.
5. Save the **.BOS** file into a folder of your choice.

Note: *It is encouraged that you store .BOS files in the same folder as the L1® Updater Application.*

L1 Updater Application Screen



Exit 

Help

Bose® L1® family of products

T1 Firmware DSP:	Update	
T1 ToneMatch Presets:	Update	
T1 ToneMatch A:	Update	
T1 ToneMatch B:	Update	
T1 ToneMatch C:	Update	
T1 Factory Scenes:	Update	
User Scenes:	Update	Backup
T1 Shared Scenes:	Update	Backup
PS II System EQ:	Update	
PS II Firmware:	Update	

T1 Firmware DSP

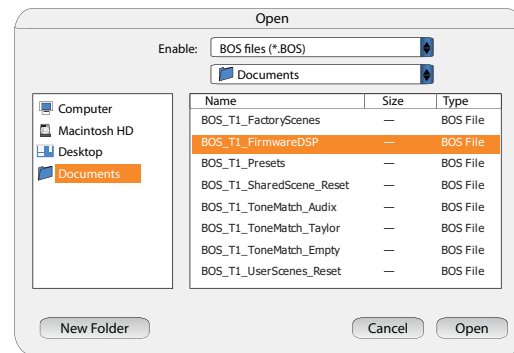
T1 Firmware DSP:

Update

The DSP Firmware is the operating platform that determines overall functionality of the T1's Digital Signal Processor. When you open the *L1® Updater Software* the current DSP Firmware version on your T1 will be displayed along with the **Update** button.

Updating DSP Firmware

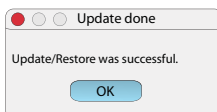
1. Click on the **Update** button in the same row as the **T1 DSP Firmware**.
This will open a dialog box asking you which folder to look in for **.BOS** files.
2. Select desired folder from drop down list.
3. Scroll through folder until you locate the DSP Firmware **.BOS** file.
4. Double click on the DSP Firmware **.BOS** file.



The update process will begin and a status bar will be displayed illustrating progress and the message "Updating Software Please Wait" will be displayed on your T1 screen. Update will take approximately 10 minutes to complete.



A message appears when the update is complete. Click OK to close the box and the T1 will return to the state it was in prior to the update.



Important: If the firmware update fails immediately turn off the power to the T1, wait 2 seconds and restore power to the T1 before trying your update again.

T1 ToneMatch® Presets

T1 ToneMatch Presets:

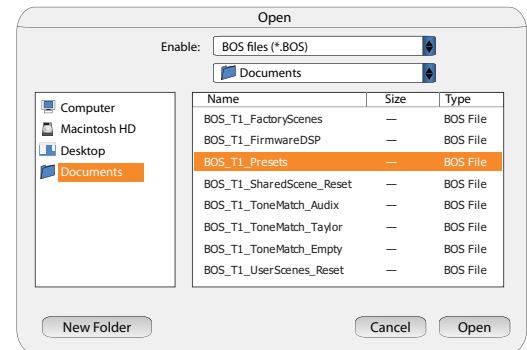
Update

The ToneMatch preset version contains the T1's Factory ToneMatch preset library. This is offered as a bundle and does not include ToneMatch A, B, and C banks. When you open the L1 Updater Software the current ToneMatch version on your T1 will be displayed along with the **Update** button.

Stop! Please Read — *Uploading anything other than the default preset files into this location will overwrite the existing version of the ToneMatch presets. To correct this you can easily repeat the update process above making sure that you load the default ToneMatch presets to this location.*

Updating ToneMatch® Presets

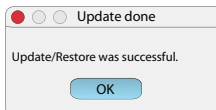
1. Click on the **Update** button in the same row as the **T1 ToneMatch Preset** version.
This will open a dialog box asking you which folder to look in for **.BOS** files.
2. Select desired folder from drop down list.
3. Scroll through folder until you locate the T1 Presets **.BOS** file.
4. Double click on the T1 Presets **.BOS** file.



The update process will begin and a status bar will be displayed illustrating progress and the message “Updating Software Please Wait” will be displayed on your T1 screen. Update will take up to two minutes to complete.



A message appears when the update is complete. Click OK to close the box and the T1 will return to the state it was in prior to the update.



T1 ToneMatch® Preset Bank A

T1 ToneMatch A:

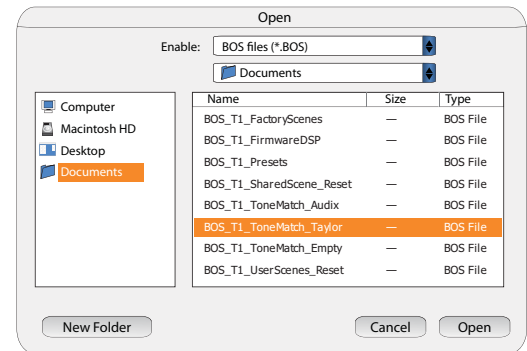
Update

ToneMatch® Bank A allows the user to download an interchangeable bank of ToneMatch® presets that have been optimized for the L1® loudspeaker. When you open the *L1® Updater Software* the current ToneMatch® version in Bank A of your T1 will be displayed along with the **Update** button.

Note: Updating will overwrite the existing preset version in ToneMatch® Bank A.

Updating ToneMatch® Bank A Presets

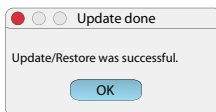
1. Click on the **Update** button in the same row as the **T1 ToneMatch A** version.
This will open a dialog box asking you which folder to look in for **.BOS** files.
2. Select desired folder from drop down list.
3. Scroll through folder until you locate the ToneMatch manufacturer **.BOS** file that you wish to upload to your T1.
4. Double click on the T1 Presets ToneMatch manufacturer **.BOS** file.



The update process will begin and a status bar will be displayed illustrating progress and the message “Updating Software Please Wait” will be displayed on your T1 screen. Update will take up to two minutes to complete.



A message appears when the update is complete. Click OK to close the box and the T1 will return to the state it was in prior to the update.



Note: This bank may be loaded with a group of specialized ToneMatch® presets. To restore bank to its default state update with the ToneMatch® presets empty, .BOS file available at www.Bose.com/musicians.

T1 ToneMatch® Preset Bank B

T1 ToneMatch B:

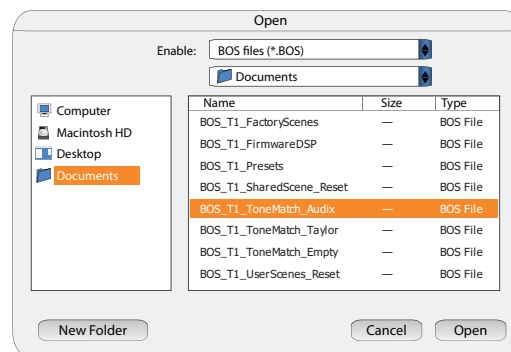
Update

ToneMatch® Bank B allows the user to download an interchangeable bank of ToneMatch® presets that have been optimized for the L1® loudspeaker. When you open the *L1® Updater Software* the current ToneMatch® version in Bank B of your T1 will be displayed along with the **Update** button.

Note: Updating will overwrite the existing preset version in ToneMatch® Bank B.

Updating ToneMatch® Bank B Presets

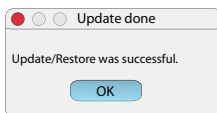
1. Click on the **Update** button in the same row as the **T1 ToneMatch B** version.
This will open a dialog box asking you which folder to look in for **.BOS** files.
2. Select desired folder from drop down list.
3. Scroll through folder until you locate the ToneMatch manufacturer **.BOS** file that you wish to upload to your T1.
4. Double click on the T1 Presets ToneMatch manufacturer **.BOS** file.



The update process will begin and a status bar will be displayed illustrating progress and the message “Updating Software Please Wait” will be displayed on your T1 screen. Update will take up to two minutes to complete.



A message appears when the update is complete. Click OK to close the box and the T1 will return to the state it was in prior to the update.



Note: This bank may be loaded with a group of specialized ToneMatch® presets. To restore bank to its default state update with the ToneMatch® presets empty, .BOS file available at www.Bose.com/musicians.

T1 ToneMatch® Preset Bank C

T1 ToneMatch C:

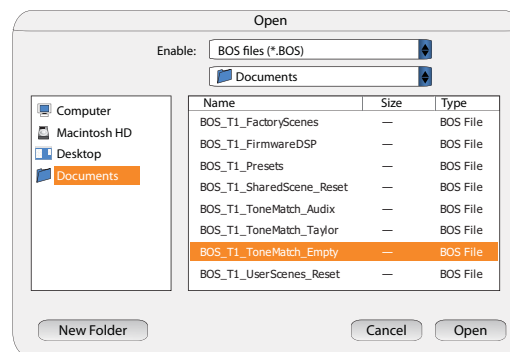
Update

ToneMatch® Bank C allows the user to download an interchangeable bank of ToneMatch® presets that have been optimized for the L1® loudspeaker. When you open the *L1® Updater Software* the current ToneMatch® version in Bank C of your T1 will be displayed along with the **Update** button.

Note: Updating will overwrite the existing preset version in ToneMatch® Bank C.

Updating ToneMatch® Bank C Presets

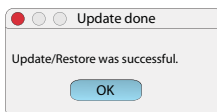
1. Click on the **Update** button in the same row as the **T1 ToneMatch C** version.
This will open a dialog box asking you which folder to look in for **.BOS** files.
2. Select desired folder from drop down list.
3. Scroll through folder until you locate the ToneMatch manufacturer **.BOS** file that you wish to upload to your T1.
4. Double click on the T1 Presets ToneMatch manufacturer **.BOS** file.



The update process will begin and a status bar will be displayed illustrating progress and the message “Updating Software Please Wait” will be displayed on your T1 screen. Update will take up to two minutes to complete.



A message appears when the update is complete. Click OK to close the box and the T1 will return to the state it was in prior to the update.



Note: This bank may be loaded with a group of specialized ToneMatch® presets. To restore bank to its default state update with the ToneMatch® presets empty, .BOS file available at www.Bose.com/musicians.

T1 Factory Scenes

T1 Factory Scenes:

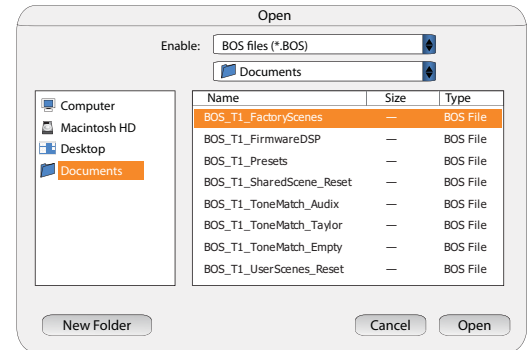
Update

The five Factory scenes contain specific default processing configurations for specialized applications. These serve as a great starting point for achieving your signature sound. When you open the L1® Updater Software the current version of the Factory Scene on your T1 will be displayed along with the **Update** button.

Note: Updating Factory Scenes will overwrite the existing settings.

Updating Factory Scenes

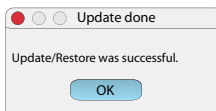
1. Click on the **Update** button in the same row as the **T1 Factory Scenes** version. This will open a dialog box asking you which folder to look in for **.BOS** files.
2. Select desired folder from drop down list.
3. Scroll through folder until you locate the Factory Reset **.BOS** file that you wish to download.
4. Double click on the T1 Presets Factory Reset **.BOS** file.



The update process will begin and a status bar will be displayed illustrating progress and the message “Updating Software Please Wait” will be displayed on your T1 screen. Update will take up to two minutes to complete.



A message appears when the update is complete. Click OK to close the box and the T1 will return to the state it was in prior to the update.



User Scenes

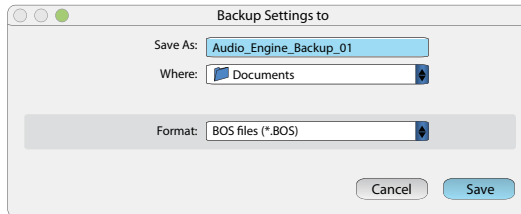
User Scenes:	Update	Backup
--------------	--------	--------

User Scenes are a bank of 10 user-definable scenes for saving and recalling all your favorite settings. You can rewrite over these as many times as you want. When you open the *L1® Updater Software* the current version of the User Scenes on your T1 will be displayed along with an **Update** and **Backup** button.

Backing Up User Scenes

After saving your user scenes you may back them up to your computer. When you open the *L1® Updater Software* the current version of the User Scenes on your T1 will be displayed along with an **Update** and **Backup** button.

1. Click on the **Backup** button in the same row as the **User Scenes** version. This will open a dialog box asking you to specify a download location.

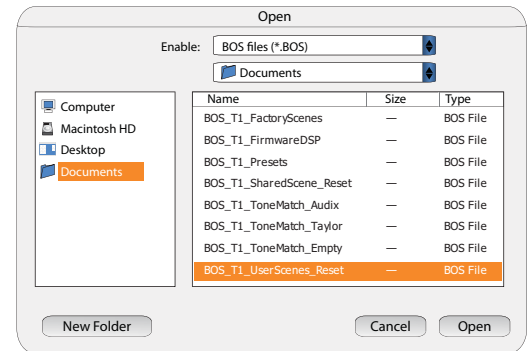


2. Specify download location.
3. Choose a file name that ends with a **.BOS** file extension.
4. Click the **Save** button

Once the update is complete you will receive confirmation.

Updating User Scenes

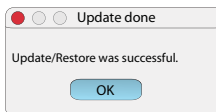
1. Click on the **Update** button in the same row as the **User Scenes** version.
This will open a dialog box asking you which folder to look in for **.BOS** files
2. Select desired folder from drop down list.
3. Scroll through folder until you locate the User Scene **.BOS** file that you wish to download.
4. Double click on the User Scene **.BOS** file.



The update process will begin and a status bar will be displayed illustrating progress and the message “Updating Software Please Wait” will be displayed on your T1 screen. Update will take up to two minutes to complete.



A message appears when the update is complete. Click OK to close the box and the T1 will return to the state it was in prior to the update.



Note: We suggest performing the Back Up process prior to updating your User Scenes. This will preserve your current settings before they are overwritten by the Updating User Scenes process

T1 Shared Scenes

T1 Shared Scenes:

Update

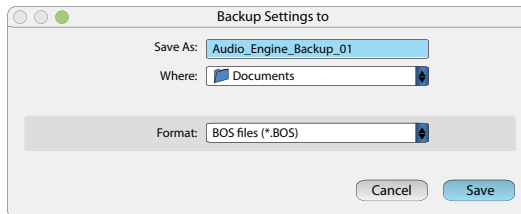
Backup

The Shared Scene is a single user-definable scene for saving settings that may later be shared with other T1 ToneMatch® audio engine users. When you open the *L1® Updater Software* the current version of the Shared Scene on your T1 will be displayed along with an **Update** and **Backup** button.

Backing Up Shared Scenes

When you open the *L1® Updater Software* the current version of the Shared Scenes on your T1 will be displayed along with an **Update** and **Backup** button.

1. Click on the **Backup** button in the same row as the **T1 Shared Scenes** version. This will open a dialog box asking you to specify a download location.

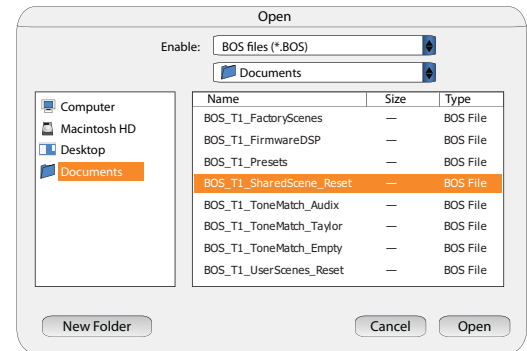


2. Specify download location.
3. Choose a file name that ends with a **.BOS** file extension.
4. Click the **Save** button

Once the update is complete you will receive confirmation.

Updating Shared Scenes

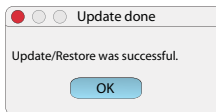
1. Click on the **Update** button in the same row as the **T1 Shared Scenes** version. This will open a dialog box asking you which folder to look in for **.BOS** files
2. Select desired folder from drop down list.
3. Scroll through folder until you locate the Shared Scene **.BOS** file that you wish to download.
4. Double click on the Shared Scene **.BOS** file.



The update process will begin and a status bar will be displayed illustrating progress and the message “Updating Software Please Wait” will be displayed on your T1 screen. Update will take up to two minutes to complete.



A message appears when the update is complete. Click OK to close the box and the T1 will return to the state it was in prior to the update.



PS II System EQ

PS II System EQ:

Update

When you are using an L1® Model II power stand to provide power to the T1 ToneMatch® audio engine the current version of the power stands EQ settings are displayed on the application screen.

PS II Firmware

PS II Firmware:

Update

When you are using an L1® Model II power stand to provide power to the T1 ToneMatch® audio engine the current Firmware version of the power stand is displayed on the application screen.